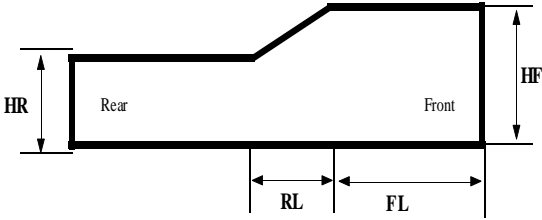


FITTING / ORDER FORM

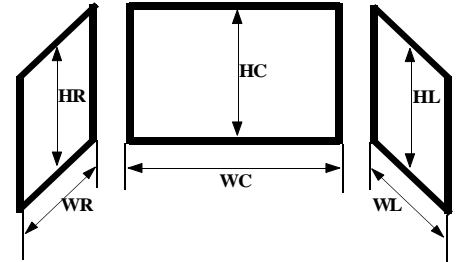
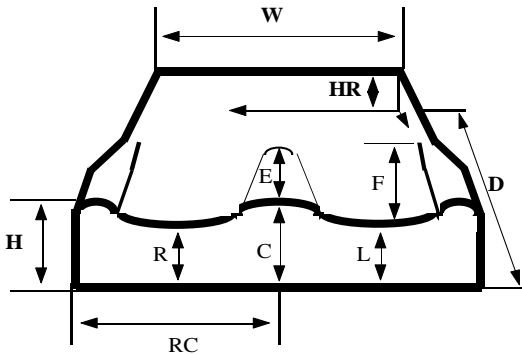
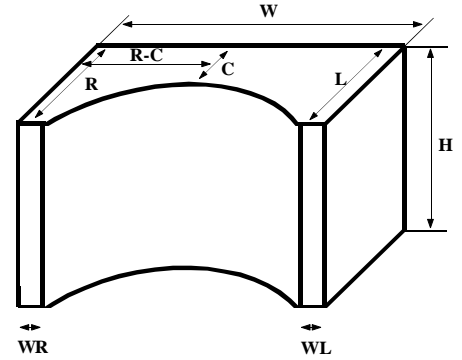
Clients Name (Last, First): _____ Dealer: _____ Sales Person: _____

Date: ___/___/___ Mobility: _____ Therapist & Facility: _____

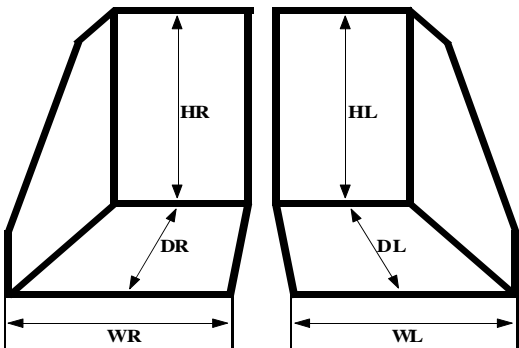
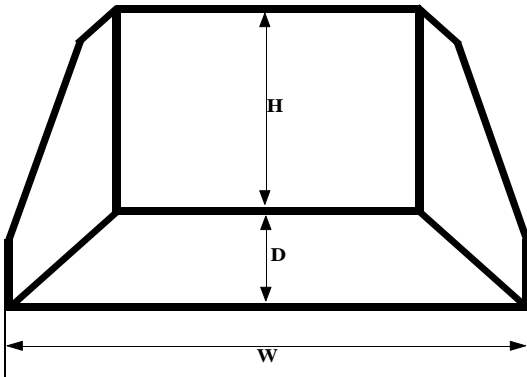
Special Modifications to Page 1



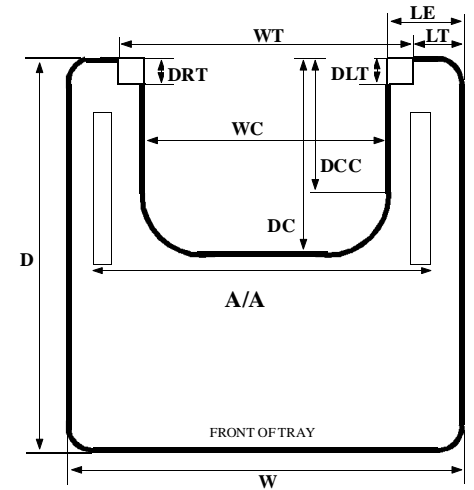
Antithrust Seat Insert		BioContoured Headrest	
HR		W	
HF		H	
RL		R-C	
FL		R	
		C	
		L	
Contoured Seat		WR	
W		WL	
D			
H			
HR		BioTriPad Headrest	
R		HR	
C		WR	
L		HC	
RC		WC	
E		HL	
F		WL	



Accessories



Double Leg Footbox		Laptray	
H		W	
W		D	
D		WT	
		WC	
		DRT	
Single Leg Footbox		DLT	
HR		LT	
WR		LE	
DR		DC	
HL		DCC	
WL		A/A	
DL		Arm Pad Thickness	



Notes / Draft

Blank area for notes or draft.

FITTING / ORDER FORM

Clients Name (Last, First): _____ Dealer: _____ Sales Person: _____

Date: ___/___/___ Mobility: _____ Therapist & Facility: _____

Backs

S21	Large Planar Curved Back. Large standard size (22" wide or greater), w/mounting Hrdwr., multi-foams (up to 1.5" of Sunmate or Confor), planar back with symmetrical contours that can exist at the Thorax area or the Pelvic region (Posterior and lateral support). With any type std. duty non-quick removable mounting Hardware.
S22	Standard Planar Curved Back. Any standard size (Up to 22" wide), w/mounting Hrdwr., multi-foams (up to 1.5" of Sunmate or Confor), planar back with symmetrical contours that can exist at the Thorax area or the Pelvic region (Posterior and lateral support). With any type std. duty non-quick removable mounting Hardware
S23	Large Planar Back with Std Laterals. Large standard size (22" wide or greater), w/mounting Hrdwr., multi-foams (up to 1.5" of Sunmate or Confor), non contoured back with standard 90 degrees lateral trunk supports (pair). With any type std. duty non-quick removable mounting Hardware
S24	Std Planar Back with Std Laterals. Standard size (up to 22" wide), w/mounting Hrdwr., multi-foams (up to 1.5" of Sunmate or Confor), non contoured back with standard 90 degrees lateral trunk supports (pair). With any type std. duty non-quick removable mounting Hardware
S25	Large Planar Back. Large standard size (22" wide or greater), w/mounting Hrdwr., multi-foams (up to 1.5" of Sunmate or Confor), non contoured back (Posterior support only). With any type std. duty non-quick removable mounting Hardware
S26	Standard Planar Back. Standard size (Up to 22" wide), w/mounting Hrdwr., multi-foams (up to 1.5" of Sunmate or Confor), non contoured back (Posterior support only). With any type std. duty non-quick removable mounting Hardware
S27	Large Back. Large standard size (22" wide or greater), single foam (up to 1.5" of Sunmate or Confor).
S28	Standard Back. Standard size (up to 22"), single foam (up to 1.5" of Sunmate or Confor).

Seats

S31	Large Positioning/Contoured Seat Cushion. Large standard size (22" wide or greater), multi-foams (up to 2" of Sunmate or Confor) ¼" HDPE internal base, medium-firm planar seat symmetrically contoured (medial & lateral support). Velcro or bolted to pan.
S32	Standard Positioning /Contoured Seat Cushion. Any standard size (Up to 22" wide), multi-foams (up to 2" of Sunmate or Confor), ¼" HDPE internal base, medium-firm planar seat symmetrically contoured (medial and lateral support). Velcro or bolted to pan.
S33	Large Skin Protection/Contoured Seat Cushion. Large standard size (22" wide or greater), multi-foams (up to 2" of Sunmate or Confor) ¼" HDPE internal base, soft linear seat symmetrically contoured (medial & lateral support). Velcro or bolted to pan.
S34	Standard Skin Protection /Contoured Seat Cushion. Any standard size (Up to 22" wide), multi-foams (up to 2" of Sunmate or Confor), ¼" HDPE internal base, soft linear seat symmetrically contoured (medial and lateral support). Velcro or bolted to pan.
S35	Large Seat Cushion. Large standard size (22" wide or greater), single foam (up to 1.5" of Sunmate or Confor), skin protection cushion attached via velcro to the seat pan or to the sling seat.
S36	Standard Seat Cushion. Standard size (up to 22" wide), single foam (up to 1.5" of Sunmate or Confor), skin protection cushion attached via velcro to the seat pan or to the sling seat.

Pediatrics Backs

S41	Standard Planar/Linear Back. Standard pediatric size, w/mounting Hrdwr., multi-foams (up to 1.5" of Sunmate or Confor), non contoured back (Posterior support only).
-----	---

Pediatrics Seats

S42	Standard Planar/Linear Seat. Any standard pediatric size, w/mounting Hrdwr., multi-foams (up to 1.5" of Sunmate or Confor),
-----	--

Seat & Back Interfaces to Accept Cushions

S91	½" HDPE Seat pan with any type std. duty non-quick removable mounting Hardware
S92	½" HDPE Back pan with any type std. duty non-quick removable mounting Hardware
S93	¼" HDPE Interface Plate to mount molded seat or molded back to either seat or back pan (must add pan)

Note: Only for NYS – Medicaid → If the customization of the BioDynamics CMS approved **Bio-ST Back (E2617)** and/or **Bio-ST Seat (E2609)** fit one of the above Backs and/or Seats, you should consider

	Adults (Std. & Barriatric)								Pediatrics									
BioD	S21	S22	S23	S24	S25	S26	S27	S28	S31	S32	S33	S34	S35	S36	S41	S42	S81	S82
Caid	E2616	E2615	E2621	E2620	E2614	E2613	E2612	E2611	E2606	E2605	E2608	E2607	E2604	E2603	E2291	E2292	E2293	E2294

Bio - ST[®] Custom Heavy Duty Seat & Back Products

Backs

S61	Solid Back Insert with High Density Polyethylene interface plate (HDPE), 1.5" of Sunmate or Confor foam, zippered Neoprene Cover, Heavy Duty Depth and Angle Adjustable Mounting Hardware (non quick release).
S62	Solid Back Insert with High Density Polyethylene interface plate (HDPE), 1.5" of Sunmate or Confor foam, zippered Neoprene Cover, Heavy Duty Depth and Angle Adjustable Mounting Hardware (non quick release) with fixed 90 degree Lateral Trunk Supports .
S63	Solid Back Insert with High Density Polyethylene interface plate (HDPE), 1.5" of Sunmate or Confor foam, zippered Neoprene Cover, Heavy Duty Depth and Angle Adjustable Mounting Hardware (non quick release) with fixed 90 degree Lateral Trunk Supports and fixed 90 degree Lateral Hip Supports .
S64	Solid Back Insert with High Density Polyethylene interface plate (HDPE), 1.5" of Sunmate or Confor foam, zippered Neoprene Cover, Heavy Duty Depth and Angle Adjustable Mounting Hardware (non quick release) with fixed 90 degree Lateral Hip Supports .

Seats

S71	Solid Seat Insert with High Density Polyethylene interface plate (HDPE), 2" of Sunmate or Confor foam, zippered Neoprene Cover,
-----	--

BioDynamics Ltd – 160 Terminal Dr. – Plainview, New York 11803 – www.BioDynamics.us

E-Mail: quote@BioDynamics.us Fax: 516.349.9229 - 866.659.2345 Voice: 516.777.2222 - 866.669.2345

FITTING / ORDER FORM

Clients Name (Last, First): _____ Dealer: _____ Sales Person: _____

Date: ___/___/___ Mobility: _____ Therapist & Facility: _____

	Heavy Duty Height and Angle Adjustable Mounting Hardware (non quick release).
S72	Solid Seat Insert with High Density Polyethylene interface plate (HDPE), 2" of Sunmate or Confor foam, zippered Neoprene Cover, Heavy Duty Height and Angle Adjustable Mounting Hardware (non quick release) with fixed 90 degree Lateral Hip Supports .
S73	Solid Seat Insert with High Density Polyethylene interface plate (HDPE), 2" of Sunmate or Confor foam, zippered Neoprene Cover, Heavy Duty Height and Angle Adjustable Mounting Hardware (non quick release) with fixed 90 degree Lateral Hip Supports and fixed 90 degree Lateral Knee Supports .
S74	Solid Seat Insert with High Density Polyethylene interface plate (HDPE), 2" of Sunmate or Confor foam, zippered Neoprene Cover, Heavy Duty Height and Angle Adjustable Mounting Hardware (non quick release) with fixed 90 degree Lateral Knee Supports .

Pediatric Backs

S81	Solid Back Insert with High Density Polyethylene interface plate (HDPE), 1.5" of Sunmate or Confor foam, zippered Neoprene Cover, Heavy Duty Depth and Angle Adjustable Mounting Hardware (non quick release).
-----	---

Pediatric Seats

S82	Solid Seat Insert with High Density Polyethylene interface plate (HDPE), 2" of Sunmate or Confor foam, zippered Neoprene Cover, Heavy Duty Height and Angle Adjustable Mounting Hardware (non quick release).
-----	--

Modifications - Customization - Accessories

Backs		Seats	
BB	Extra 1/2" of Sunmate or Confor Foam	SB	Extra 1/2" of Sunmate or Confor Foam
BC	Each 1/2" of Pudgee Foam	SC	Each 1/2" of Pudgee Foam
BD	Each 1/2" of Gel	SD	Each 1/2" of Gel
BE	Oversize Width (one unit every 2" over 20")	SE	Oversize Width (one unit every 2" over 20")
BF	Oversize Height (one unit every 2" over 20")	SF	Oversize Depth (one unit every 2" over 20")
BG	Customization of Back Shape ("T" back, "I" back, complete scapular cut out, curved top of back) 1 unit for ea.	SG	Shape Customization (special cut outs for: hips and/or thighs support, leg length discrepancy, back canes, cross bars, hangers, Growth Tail,...) 1 un for ea
BH	Bi-Angular Back	SI	Customization of Seat Contours (Anti-thrust, Abductor contour, Adductor influence, Full width seat with foam over seat rails, Roll front end of seat, Pelvic obliquity, Wedge, Ischial recess, Undercut for tight hamstrings) 1 unit for ea.
BI	Customization of Back Contours (Lateral Contour back, Full width back with foam over back canes, Wedge back, reduced foam for scapular relief, lateral build-up to 60% of back height, internal lumbar roll) 1 unit for ea.	SJ	Vinyl, Neoprene, Polarflece or Darlex Cover
BJ	Vinyl, Neoprene, Polarflece or Darlex Cover	SS	Extra or Removable Cover for Seat (Neoprene or Darlex)
BQ	Extra or Removable Cover for Back (Neoprene or Darlex)	SL	Std. Lateral Hip Support, Pad only, (pair)
BL	Std. Lateral Hip Support, Pad only, (pair)	ST	Lateral Hip Support, Contoured at rear, Pad only, (pair)
BT	Lateral Hip Support, Contoured at rear, Pad only, (pair)	SM	Std. Lateral Knee Support, Pad only, (pair)
BM	Std. Lateral Trunk Support, Pad only, (pair)	SO	L-Shape Lateral Knee Support, Pad only, (pair)
BP	Contoured Lateral Trunk Support, Front and/or Rear contour, Pad only, (pair)	SN	Std. Medial Knee Support, Pad only (pommel)
BO	Height, Depth & Angle Adjustable Lumbar Support	SP	L-Shape Medial Knee Support, Pad only (pommel)
BZ	Upgrade Back to HD type.(HD-plate (HDPE) interfaces Back Hrdwr. with Back Insert, Allows "T" & "I" Configurations, T-Nuts for extra accessories)	SZ	Upgrade Seat to HD type.(HD-plate (HDPE) interfaces Seat Hrdwr. with Seat Insert, Allows "T" & "I" Configurations, T-Nuts for extra accessories)
BY	Custom T-nuts Insertion to Back, Up to 10 each.	SW	Custom T-nuts Insertion to Seat, Up to 10 each.
BX	Custom Back or Custom Modification(s) to Back, any *****	SX	Custom Seat or Custom Modification(s) to Seat, any *****
AA	Fixed and 90 degrees Hardware for Lateral Thoracic Supports, Lateral Hip Guides, Lateral Knee Supports or Medial Knee Support	AR	Heavy Duty Height and Angle Adjustable Hardware for Seat (Complete Kit)
AT	Fixed Metal Straps Hardware for Lateral Hip Guides or Lateral Knee Supports	AS	Heavy Duty Depth and Angle Adjustable Hardware for Back (Complete Kit)
AB	Swing Away Hardware for Lateral Thoracic Supports, Lateral Hip Guides or Lateral Knee Supports	AF	Upgrade to Offset Hardware for Lateral Thoracic Supports, Lateral Hip Guides, Lateral Knee Supports or Medial Knee Support, add to hardware
AC	Flip Down Hardware for Medial Knee Support	AN	Upgrade to Extra Heavy Duty Height and Angle Adjustable Hardware for Seat
AD	Removable Hardware for Lateral Thoracic Supports, Lateral Hip Guides or Lateral Knee Supports	AG	Upgrade to Height and Angle Adjustable Hardware for Seat
AL	Removable Hardware for Medial Knee Support	AO	Upgrade to Extra Heavy Duty Depth and Angle Adjustable Hardware for Back
AE	Single Knob Adjustable Hrdwr. for Lateral Thoracic Supports, Lateral Hip Guides, Lateral Knee Supports or Medial Knee Support, add to hardware	AH	Upgrade to Depth and Angle Adjustable Hardware for Back
AP	Extra Heavy Duty Height and Angle Adjustable Hardware for Seat (Complete Kit)	AI	Upgrade to Quick Release Hardware, Versalock for seat or Back
AQ	Extra Heavy Duty Depth and Angle Adjustable Hardware for Back (Complete Kit)	AJ	Upgrade to Quick Release Hardware Quickclamp for seat or Back
		AK	Upgrade to Grenade Pin for Flush Mount Hardware
		AM	Multi-position swing away hardware for joystick

Foam: Sunmate Soft; Sunmate Medium; Confor Pink; Confor Yellow.

Cover: Neoprene (Rubatex); Knit; Darlex; Polarflece; Vinyl.